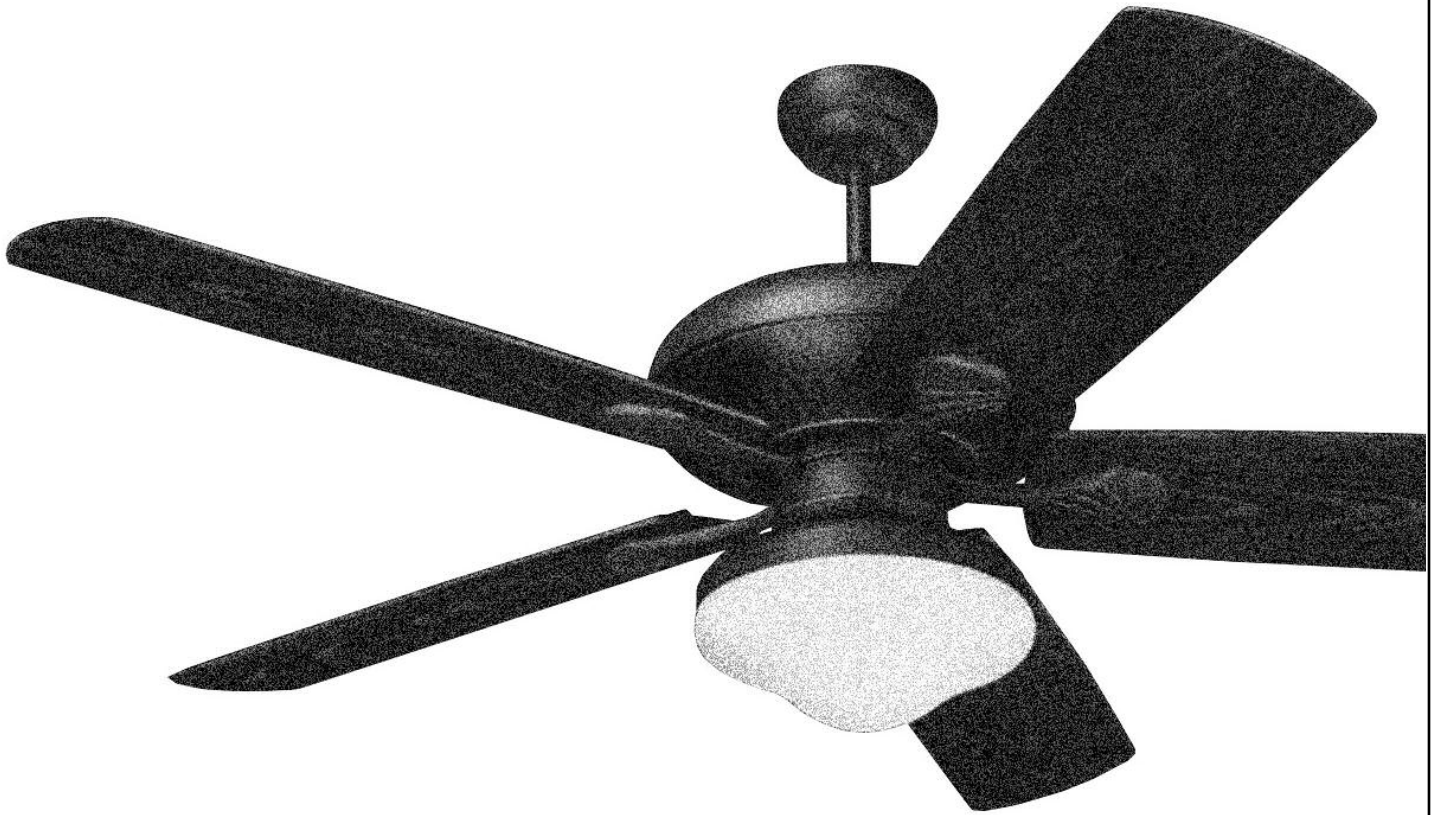


OWNER'S MANUAL

Ceiling Fan Installation Instructions



For 5SH54XXD-L Series Fans

READ AND SAVE THESE INSTRUCTIONS

Total fan weight
with light kit

**MONTE
CARLO**®



Installation

SAFETY TIPS

WARNING: TO REDUCE THE RISK OF FIRE, ELECTRIC SHOCK, OR INJURY TO PERSONS, OBSERVE THE FOLLOWING: READ AND SAVE THESE INSTRUCTIONS

1. Installation work and electrical wiring must be done by qualified person(s) in accordance with applicable codes ANSI/NFPA 70-1999), including fire-rated construction.
2. Use this unit only in the manner intended by the manufacturer. If you have any questions contact the manufacturer.
3. After making the wire connections, the wires should be spread apart with the grounded conductor and the equipment-grounding conductor on one side of the outlet box and ungrounded conductor on the other side of the outlet box.
4. Before you begin installing the fan, Switch power off at Service panel and lock service disconnecting means to prevent power from being switched on accidentally. When the service disconnecting means cannot be locked, securely fasten a prominent warning device, such as a tag, to the service panel.
5. Be cautious! read all instructions and safety information before installing your new fan. Review the accompanying assembly diagrams.
6. When cutting or drilling into wall or ceiling, do not damage electrical wiring and other hidden utilities.
7. Make sure the installation site you choose allows the fan blades to rotate without any obstructions. Allow a minimum clearance of 7 feet from the floor to the trailing edge of the blade.
8. To reduce the risk of fire, electric shock, or personal injury, mount to outlet box or supporting system acceptable for fan support. (Mounting must support at least 35 lbs.)
9. Do not bend blade holders during installation to motor, balancing or during cleaning. Do not insert foreign object between rotating blades.
10. Attach the mounting bracket using only the hardware supplied with the outlet box.
11. To reduce the risk of fire or electric shock, do not use this fan with any solid state fan speed control device, or variable speed control.
12. If this unit is to be installed over a tub or shower, it must be marked as appropriate for the application.
13. NEVER place a switch where it can be reached from a tub or shower.
14. The combustion airflow needed for safe operation of fuel-burning equipment may be affected by this unit's operation. Follow the heating equipment manufacturer's guideline safety standards such as those published by the National Fire Protection Association (NFPA), and the American Society for Heating, Refrigeration and Air Conditioning Engineers (ASHRAE) and the local code authorities.
15. Before servicing or cleaning unit, Switch power off at Service panel and lock service disconnecting means to prevent power from being switched on accidentally. When the service disconnecting means cannot be locked, securely fasten a prominent warning device, such as a tag, to the service panel.
16. To assure success of this installation be sure to read the instructions and review the diagrams thoroughly before beginning. Follow the instructions that are applicable for your light kit.
17. Review the installation instructions supplied with your fan. Make sure that your fan has been wired properly into the ceiling to allow use with your light kit.
18. All electrical connections must be in accordance with local codes, ordinances, and national electrical codes.
19. If you are unfamiliar with methods of installing electrical wiring, secure the services of a qualified electrician.
20. Caution - risk of electrical shock. Before starting installation, disconnect the power by turning off the circuit breaker or removing the fuse at the fuse box. Turning the power off using the fan switch is not sufficient to avoid electrical shock.
21. Warning: Risk of fire, use only compact fluorescent lamps rated 13 watts.
22. Warning: This fixture is not dimmable. Use only with on/off switch. Do not use in conjunction fan/light remote controls or light dimmers.
23. NOTE: The important safeguards and instructions appearing in this manual are not meant to cover all possible conditions and situations that may occur. It must be understood that common sense, caution and care are factors that cannot be built into any product. These factors must be supplied by the person(s) caring for and operating the unit.
24. Note--For Outdoor Fans Only: Suitable for use in wet locations when installed in a GFCI protected branch circuit.

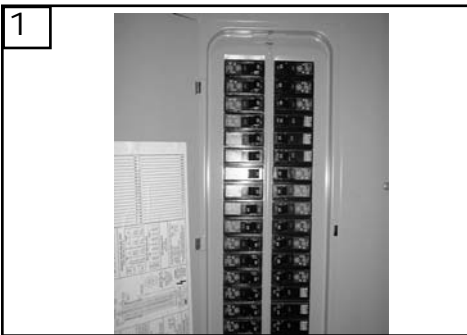
TOOLS REQUIRED

Phillips Screwdriver

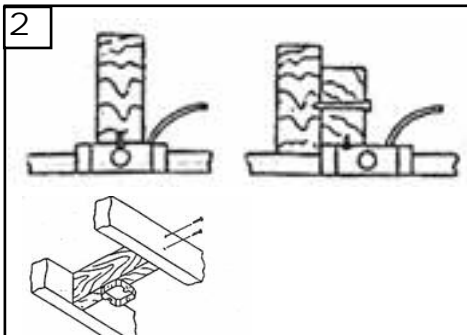
Wire Cutters

Pliers

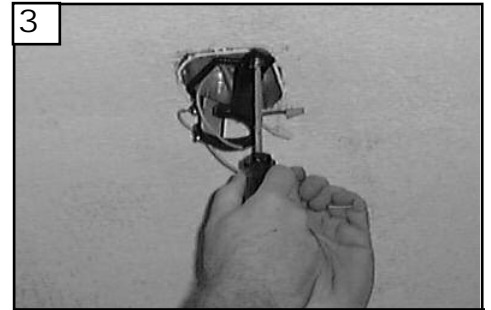
Step Ladder



1
Before you begin installing the fan, Switch power off at Service panel and lock service disconnecting means to prevent power from being switched on accidentally. When the service disconnecting means cannot be locked, securely fasten a prominent warning device, such as a tag, to the service panel.



2
Before installing this fan make sure the outlet box is properly installed to the house structure. To reduce the risk of fire, electric shock, or personal injury, mount to outlet box or supporting system acceptable for fan support. (Mounting must support at least 35 lbs.)



3
Use metal outlet box suitable for fan support (must support 35 lbs). Before attaching fan to outlet box, ensure the outlet box is securely fastened by at least two points to a structural ceiling member (a loose box will cause the fan to wobble). Use only the screws provided with the outlet box.



4 Remove keeper from pin and then pin from yoke for downrod.



5 Loosen set screws with locking nuts.



6 Loosen screw on downrod ball.



7 Slide the downrod ball down, remove the cross pin and save.



8 Thread the leadwires and safety cable through the downrod and place the downrod into the yoke. Insert the clevis pin by aligning the holes from the yoke and downrod. Insert the keeper pin into the end of the clevis pin.



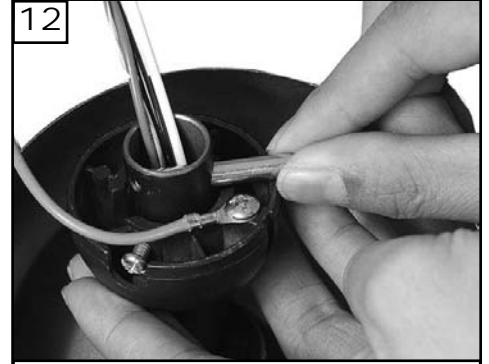
9 Tighten the set screws securely.



10 Place the yoke cover over the downrod as shown above.



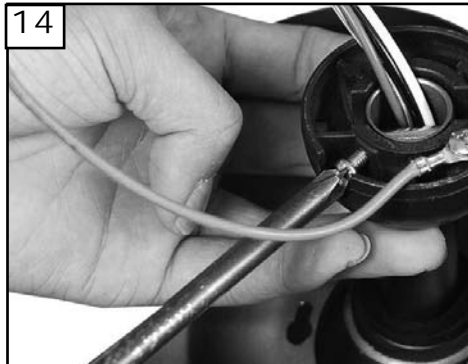
11 Place the canopy over the downrod as shown above.



12 Place the downrod ball over the downrod and slide the cross pin back into the hole it was removed from.



13 Pull the downrod ball up aligning the seated area to fit around the crosspin.



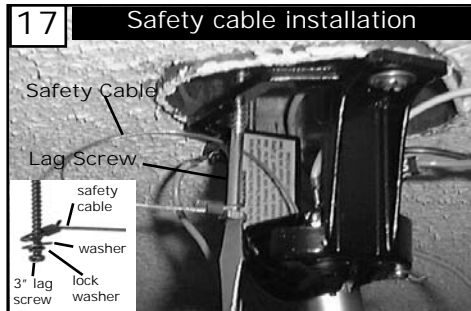
14 While holding the downrod ball in place, tighten the set screw securely.



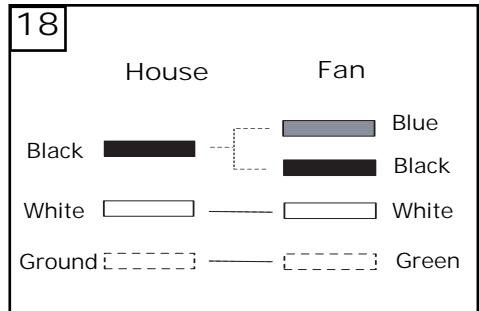
15 Check the motor for plastic shipping stabilizer tabs and remove them if they are present.



16 Hang assembled fan from the mounting bracket installed to ceiling in previous steps. Make sure the fan is hanging straight. Rotate fan until the tab on the Mounting bracket engages the slot on the Downrod Ball. This must be done to prevent the fan body from rotating when the blades are in motion.



17 **Safety cable installation**
For Canadian installation and for USA fan and light kit combinations over 35 lbs, in both flush and downrod mode the safety cable must be installed into the house structure beams using the 3" lag screws, washers, and lock washers provided. Make sure that when the safety cable is fully extended the leadwires are longer than the cable and no stress is placed on the leadwires.



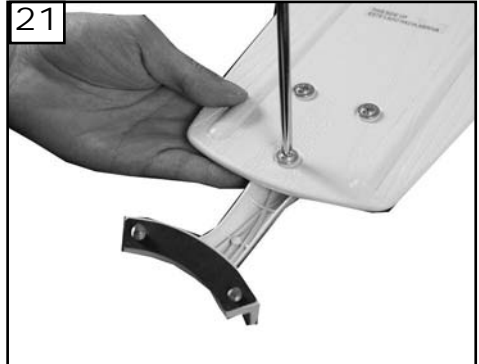
18 Connect black and blue wire from fan to Black or (Hot) wire from house. Connect White wire from Fan to White (Neutral) wire from house. Connect Ground leads from mounting bracket and downrod to Ground lead from house. Refer to Safety Tips section of manual.



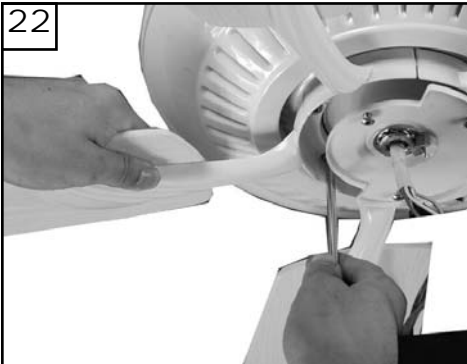
19 Make wire connections to power source using wire nuts provided. Make sure that no filaments are outside of the wirenut. After making the wire connections, the wires should be spread apart with the grounded conductor and the equipment-grounding conductor on one side of the outlet box and ungrounded conductor on the other side of the outlet box.



20 Lift canopy to ceiling aligning the key hole slots with the screws on the bottom of the mounting bracket. Rotate the canopy counter clockwise to lock in place. Tighten the screws to secure the canopy. See insert for key hole shape.



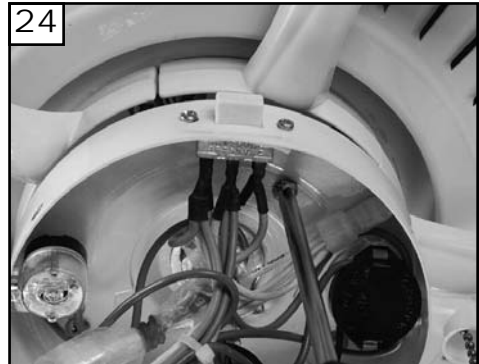
21 Attach blade brackets to blades using the blade bracket screws and washers provided.



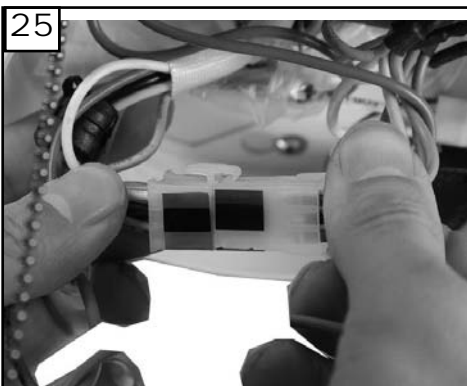
22 The screws, washers, and motor pads are pre-installed to the blade holders. Attach blade assembly to motor and tighten screws securely.



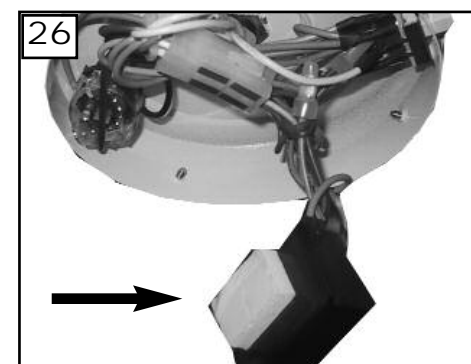
23 Remove 1 screw and save. Loosen other 2 screws. Remove cap by twisting and pulling down. Save screws.



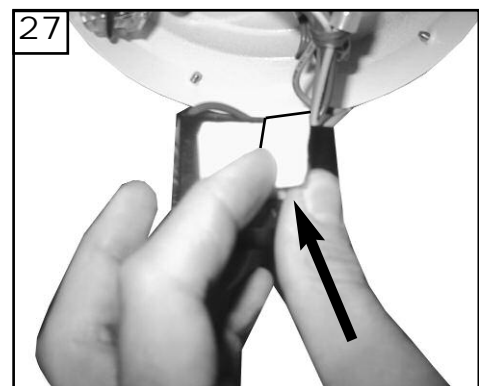
24 Install switch housing to light kit by aligning key slots and turning clockwise. Tighten 3 screws.



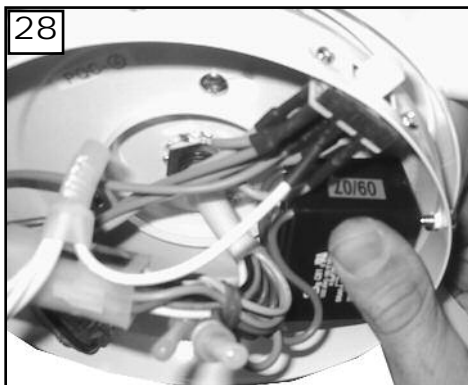
25 Connect 9 plug connectors together.



26 Black capacitor box needs to be stuck to the switch housing. Not being attached can cause motor noise.



27 Remove twin adhesive tape from the black capacitor as shown above.



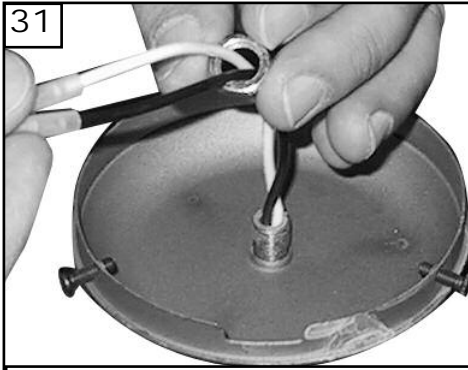
Place and press firmly on the capacitor to stick it to the switch housing. Be sure it is secure.



Remove 3 screws on the ridge of the switch cap and save.



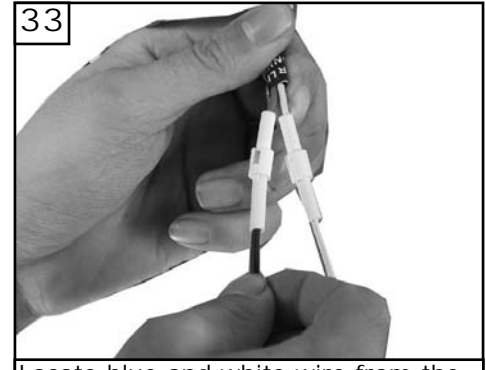
If not installing the light kit skip to step 40. Push wires through center hole of the switch cap.



Install the keeper nut from the lead wires.



Install keeper nut from the threaded pipe of the light kit.



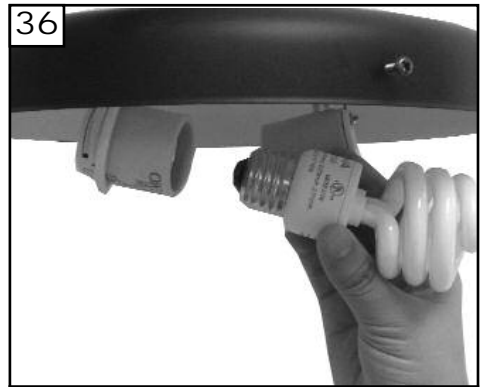
Locate blue and white wire from the fan marked "For light kit". Connect blue from fan to black from light and white from fan to white from light by pushing connectors together.



Attach switch cap to fan by lining up 3 screw holes and installing the 3 screws removed and saved from earlier step. Tighten screws securely.



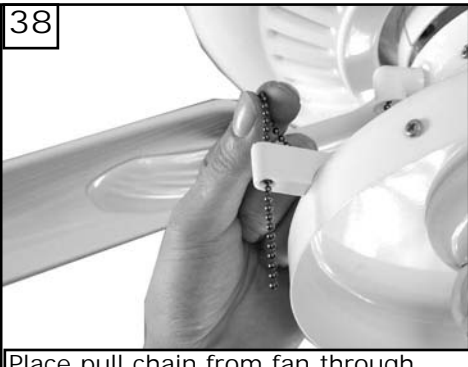
Loosen 3 screws on the ridge of the light kit.



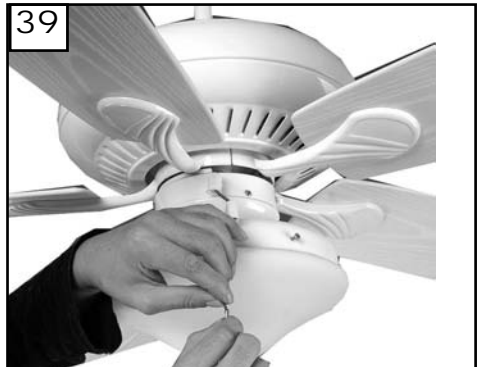
Install 2 x 13 watt (E27) based fluorescent bulbs. (Bulbs Included)



Push glass up into fitter and hand tighten the 3 screws to hold in place.



Place pull chain from fan through guide from light kit. Be sure they are lined up vertically.



Attach fob with connector to extend your pull chains.

40

Installing without light kit.



Attach switch cap to fan by lining up 3 screw holes and installing the 3 screws removed and saved from earlier step. Tighten screws securely.

TROUBLE SHOOTING

If you have difficulty operating your new ceiling fan, it may be the result of incorrect assembly, installation, or wiring. In some cases, these installation errors may be mistaken for defects. If you experience any faults, please check this Trouble Shooting Chart. If a problem cannot be remedied, or you are experiencing difficulty in installation, please call our Customer Service Center at the number printed on your parts list insert sheet.

Warning: Before servicing or cleaning unit, Switch power off at Service panel and lock service disconnecting means to prevent power from being switched on accidentally. When the service disconnecting means cannot be locked, securely fasten a prominent warning device, such as a tag, to the service panel.

1. If fan does not start:
 1. Check main and branch circuit fuses or circuit breakers.
 2. Check line wire connections to fan and switch wire connections in switch housing.
CAUTION: Make sure main power is turned off.
 3. Make sure forward/reverse switch is firmly in up or down position. Fan will not operate when switch is in the middle.
 4. Make sure that shipping stabilizer tabs have been removed from motor.

2. If fan sounds noisy:
 1. Check to make sure all screws in motor housing are snug (not over tightened).
 2. Check to make sure the screws which attach the fan blade holder to the motor are tight.
 3. Check to make sure wire nut connectors in switch housing are not rattling against each other or against the interior wall of the switch housing.

CAUTION: Make sure main power is turned off before entering switch housing.
 4. If using an optional Ceiling Fan Light Kit, check to be sure the screws securing the glassware are finger tight. Check to be sure light bulb is tight in socket and not touching glass shade(s). If vibration persists from glass, remove glass and install a 1/4" wide rubber band on glass neck to act as an insulator. Replace glass and tighten screws against rubber band.
 5. Some fan motors are sensitive to signals from Solid State variable speed controls. **DO NOT USE a Solid State variable speed control.**
 6. Allow "break-in" period of 24 hours. Most noises associated with a new fan will disappear after this period.

3. If fan wobbles:
 1. Make sure that the ridge of the canopy engages the notch in the downrod ball. (See illustration in Step #6 of Downrod Mount installation).
 2. Check that all blades are screwed firmly into blade holders.
 3. Check that all blade holders are tightened securely to motor.
 4. Make sure that canopy and mounting bracket are tightened securely to ceiling junction box and junction box is mounted firmly to ceiling joist.
 5. Most fan wobble problems are caused when blade levels are unequal. Check this level by selecting a point on the ceiling above the tip of one of the blades. Measure this distance from blade tip to ceiling. Keeping measure within 1/8", rotate the fan until the next blade is positioned for measurement. Repeat for each blade. If all blade levels are not equal, you can adjust blade levels by the following procedure. To adjust a blade tip down, insert a washer (not supplied) between the blade and blade holder at the screw closest to the motor. To adjust a blade tip up, insert washer (not supplied) between the blade and blade holder at the two screws farthest from the motor. Reverse the position of the washer if blades mount from top of blade.
 6. If blade wobble is still noticeable, interchanging two adjacent (side by side) blades can redistribute the weight and possibly result in smoother operation.

4. If light does not work:
 1. Check blue wire from fan to make sure it is connected to hot wire from house
 2. Check for loose or disconnected wires in fan switch housing.
 3. Check for loose or disconnected wires in light kit.
 4. Check for faulty light bulbs.
CAUTION: Make sure main power is turned off before entering switch housing.
WARNING: USE MAXIMUM 13 WATTS LISTED SBCFL (SELF-BALLASTED COMPACT FLUORESCENT LAMP) ONLY, NOT USING SBCFL WILL OVERHEAT THE UNIT AND CAUSE DAMAGE TO THE UNIT OR THE FAN WHICH THE UNIT IS INSTALLED TOGETHER.

MONTE CARLO®

Customer Service Center:
301 West Washington St.
Riverside, NJ 08075
1-800-519-4092
www.montecarlofans.com